



DUKE GARDENS

---

*Annual Report*

**2017**

# statement of OPERATIONS

Revenue	2017	2016
<b><i>Earned Income</i></b>		
Facility Rentals .....	\$314,388	\$314,678
Endowment Income .....	744,220	571,985
Programs and Special Events.....	158,249	162,053
<b>Total Earned Income:</b>	<b>\$1,216,857</b>	<b>\$1,048,716</b>
<b><i>Contributed Income</i></b>		
Duke University Allocation.....	\$1,317,394	\$1,260,437
Other University Support.....	332,100	381,375
Annual Fund.....	735,983	607,604
Foundations .....	\$0	\$0
Other Projects and Programs.....	436,003	469,571
Transferred in from Prior Years .....	694,467	460,973
<b>Total Contributed Income:</b>	<b>\$3,515,947</b>	<b>\$3,179,960</b>
<b>Total Revenue:</b>	<b>\$4,732,804</b>	<b>\$4,228,676</b>
<b>Expenses</b>		
Salaries and Fringe Benefits.....	\$1,972,066	\$1,848,350
Horticultural Operations.....	433,839	402,987
Programs and Special Events.....	116,175	111,996
Marketing and Public Relations .....	35,531	56,676
Development.....	94,355	81,789
Administration.....	310,174	294,705
Occupancy.....	458,367	501,629
Special Projects.....	568,757	310,902
Retained for Future Projects and Programs .....	743,540	619,642
<b>Total Expenses:</b>	<b>\$4,732,804</b>	<b>\$4,228,676</b>
<b>Fundraising</b>		
Current Operations (unrestricted).....	\$739,627	\$606,601
Capital Projects (temporarily restricted) .....	2,363,976	2,308,491
Endowment (permanently restricted).....	2,774,847	767,535
<b>Total:</b>	<b>\$5,878,450</b>	<b>\$3,682,627</b>

fiscal year runs July – June





The background of the page is a photograph of a garden. In the foreground, there are several tulips in shades of orange, yellow, and pink. In the middle ground, there is a wooden gazebo with a multi-colored, conical roof. The background is filled with lush green trees and foliage.

# Contents

**FROM THE BOARD OF ADVISORS CHAIR 4**

**FROM THE EXECUTIVE DIRECTOR 5**

**IN THE GARDENS 9**

**GARDENS OUTREACH 27**

**FRIENDS OF DUKE GARDENS 48**

**STAFF 59**

**BOARD OF ADVISORS 60**

from the **BOARD OF ADVISORS CHAIR**



Dear Friends,

This year completes my term as chair, and looking back on my years with Duke Gardens, I feel pleasure and gratitude for all that the creativity and hard work of our staff and the generosity of our donors has enabled us to achieve. My involvement with the Gardens began 10 years ago, when I signed on as a volunteer. My motive was selfish: I wanted to improve my gardening knowledge and skills, and working with Duke Gardens horticulturists seemed a good way to do it. I did learn a lot: planting, pruning, weeding, spreading mulch. And I had a great time with the other fantastic folks in my work crew. Volunteering led to service on the board, and then to service as chair. I now feel deeply planted here.

The Duke Gardens I came to know and love as a volunteer has evolved into a much more richly realized public garden than it was 10 years ago. The changes are too many to list here, and I suppose it's undiplomatic to name my favorites. But the addition of the Roney Fountain—a brilliant water display in the center of the Mary Duke Biddle Rose Garden—has surely been one of the most transformative. Another favorite, the Charlotte Brody Discovery Garden, has enabled us to focus on gardens as sources of food, history, and sustainability for the future.

Speaking of the future, although my term has ended, I'll continue my engagement with Duke Gardens, leading the capital campaign for the new Garden Gateway project. We plan to redesign and reconstruct the Anderson Street entrance to the Gardens, providing a better link to Duke's new arts district as well as visitor amenities that are sorely needed. We'll also expand the Doris Duke Center to accommodate our growing programs and events services. I look forward to this opportunity to connect the Gardens more smoothly with the campus and raise the level of our facilities to match the high level of our horticulture. I hope you'll join me.

With thanks for your support,

A handwritten signature in cursive script that reads "Cindy".

Cindy Brodhead  
*Outgoing Chair, Board of Advisors  
Chair, Garden Gateway Campaign Committee*

from the **EXECUTIVE DIRECTOR**



This year brings to a close my first decade at Duke Gardens, and I feel as fortunate to be here now as I did the very first day I visited in the spring of 2007. My first impression was of a place in which the staff, supporters and volunteers had done an amazing job over the decades creating garden spaces of incredible richness and serenity, and that if anything needed to be fixed, the awe-inspiring beauty of the place was not on the list.

I cannot thank the staff, volunteers, board of advisors and Duke administration enough for their support, advice and inspiration over the past 10 years. And I must particularly thank outgoing board chair Cindy Brodhead for her tireless efforts on our behalf, which will continue with her leadership as chair of our Garden Gateway Campaign Committee. Thanks to you all. The best is yet to come.

Each year in this publication we report on our progress with improving what already seems to be almost perfect, from artistic new garden spaces to innovative educational and public programs. Among the works you will read more about is the Piedmont Prairie in the Blomquist Garden, where we delve deeply into native plant conservation and work with Duke faculty and students to measure the developing biodiversity of the Prairie over time. This horticultural and educational initiative extends our outreach to new audiences.

Scratching an artistic itch, our staff and volunteers partnered last winter with renowned stick artist Patrick Dougherty to create “The Big Easy” on our South Lawn as a welcome to the growing arts initiative across campus and the new Rubenstein Arts Center across the street. This piece was the final gift of our dear friend Professor J. Horst Meyer and is dedicated in his memory. No one loved Duke Gardens more.

In the Asiatic Arboretum the generosity of friends resulted in one of our most beautiful views being opened behind the arched bridge. And the Doris Duke Center Gardens are now enhanced by the Welch Woodland Overlook and Stream, completing a multi-year program of adding recirculating water features to Duke Gardens. And there is much, much more...

I hope you enjoy reading this report, and that you visit often and throughout the seasons. As always, thank you for your support of Duke Gardens and Duke University.

Sincerely,

A handwritten signature in black ink that reads "Bill LeFevre". The signature is stylized and cursive.

Bill LeFevre

*“Healthy Families Durham has partnered with the Charlotte Brody Discovery Garden for four years. About twice a month, our staff comes to Duke Gardens to pick up fresh fruits and veggies to bring to vulnerable young families.*

*The Center for Child and Family Health runs the Healthy Families Durham program, which also offers early childhood intervention services through an intensive home visiting program designed to reduce child abuse, improve parent/child interaction, and increase parenting skills. Our evidence-based curriculum supports effective, warm parenting, child development, health and nutrition.*

*On behalf of the families we serve, we want to give a great big thank you to the Duke Gardens staff, volunteers and supporters who help make this partnership possible. You help our little people get on the path to healthy eating and living, one tomato at a time.”*



**Becky Kyle, MSW, LCSWA**

Family support worker

Healthy Families Durham











# In the Gardens

From left: *Hydrangea arborescens* 'Annabelle' and the redesigned pergola in the Page-Rollins White Garden; bloodroot (*Sanguinaria canadensis*) in the H.L. Blomquist Garden of Native Plants; daffodils in the Terrace Gardens; traditional Japanese lantern in the W.L. Culberson Asiatic Arboretum.

P. 1: *Magnolia x loebneri* 'Ballerina' in the Asiatic Arboretum.

P. 2: Tulips blooming in the Terrace Gardens.

Pp. 6-7: Swiss chard (*Beta vulgaris* 'Peppermint') in the Charlotte Brody Discovery Garden.

Pp. 10-11: The Piedmont Prairie and Classroom, including New York ironweed (*Vernonia noveboracensis*), purple disc sunflower (*Helianthus atrorubens*) and hyssopleaf thoroughwort (*Eupatorium hyssopifolium*).

After a year of creating dramatic new hardscape features throughout Duke Gardens, this was a year of inviting nature to take the lead. The new attractions, from Pine Clouds Mountain Stream to the Beverly and Bert Welch Woodland Garden, have filled out beautifully with lush and diverse new plantings. We also enlisted scores of helping hands to weave nature with art to create an intriguing new sculpture that has put us on the map in the art world.

## Piedmont Prairie and Classroom

The prairie's inaugural season of growth in the Blomquist Garden of Native Plants has been a gratifying spectacle for the Blomquist team and visitors alike. This living landscape of more than 20,000 plants is teeming with insects and other wildlife, and the floral display is lovely, particularly on a summer morning when the dew on the grasses resembles a million diamonds shining in the sun through the cathedral of trees.

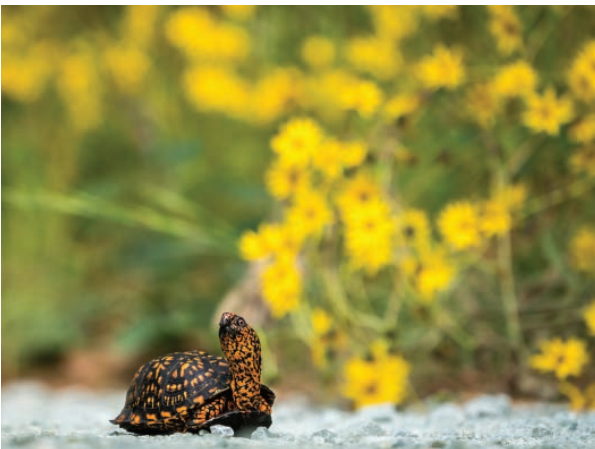




# 20,000 plants in the Piedmont Prairie



The Piedmont Prairie Classroom received its finishing touches this year with the installation of oak benches and a screen of sculptural cedar branches. Cherrybark oak trees (*Quercus pagoda*) that had to be removed from the site to create the prairie were crafted into benches that can seat 15 or more students in this open-air classroom. We also harvested long-dead eastern red cedar trees (*Juniperus virginiana*) from nearby Duke Forest, which we sanded and cut to form an organic decorative screen in lieu of opaque walls. We plan to add interpretive panels to form an outdoor “prairie museum.”



From top: The Piedmont Prairie Classroom; tall goldenrod (*Solidago altissima*), a box turtle at the Piedmont Prairie.

Facing page: Schweinitz's sunflower (*Helianthus schweinitzii*) in the Piedmont Prairie.





## “The Big Easy”

Internationally acclaimed sculptor Patrick Dougherty worked with us this winter on a new sculpture on the South Lawn, titled “The Big Easy.” Dougherty uses tree branches to build huge, charismatic works of art. Our staff worked with Dougherty to collect several truckloads of branches from Duke Forest. Then for about three weeks, Dougherty worked with his son, his assistant, Duke Gardens volunteers and staff members, and some Dougherty enthusiasts from Duke and the local community to create this special interactive work of art. We love watching children run giddily through its many doors and nooks, and seeing the intriguing perspectives it provides for quirky selfies and contemplative or romantic portraits. The sculpture is a temporary installation that should last through early 2019. We hope you will have a chance to see this architectural marvel for yourself.

*Renowned sculptor Patrick Dougherty created “The Big Easy” with an enthusiastic rotating team that included Duke Gardens volunteers and staff members.*



From top: “The Big Easy” sculpture, seen through the branches of a magnolia tree (*Magnolia grandiflora*) on the South Lawn; “The Big Easy” sculptor Patrick Dougherty.

Facing page: The traditional Japanese arched bridge as seen from the new “Travel Hopefully” seating alcove in the W.L. Culberson Asiatic Arboretum.





*“Travel Hopefully” and “Rest and Be Thankful” are scenic new seating areas in the Culberson Asiatic Arboretum.*

## Arboretum Enhancements

The Asiatic Pond has long been a favorite spot for visitors to sit and watch the waterfowl or gaze across at the Japanese arched bridge. Now, thanks to Duke Gardens supporters David and Carmen Durack, we have two attractive new seating areas for all to enjoy, titled “Travel Hopefully” and “Rest and Be Thankful.”

“Travel Hopefully” is a boulder-strewn forested alcove at the northernmost end of the main pond, which offers visitors a new perspective on the iconic red bridge, framed in the foreground by groves of towering bamboo.

“Rest and Be Thankful,” another simulated boulder outcropping, is located on the east bank of the pond between the red bridge and the zigzag bridge. It offers unobscured views of the pond, with Pine Clouds Mountain Stream (*Sho Un Kei*) in the distance.

Not far from these sites is a hillside garden, which Gardens supporter Molly Simes and her late husband, Frank, donated many years ago, and which Mrs. Simes recently contributed funds to enhance. We refinished the two teak chairs, added a new approach path, installed moss and



decorative boulders, and planted more than 100 spider lilies (*Lycoris radiata*).

The nearby Pond Viewing Shelter is also looking fantastic now, thanks to the late Dr. Horst Meyer, a longtime ardent and generous supporter of Duke Gardens. The shelter was built in the mid-1990s and was showing wear. We cleaned and repainted it, and we also reshaped the small pond, installed a liner and added a stone weir wall. A new pump system now recirculates water from the main pond through a stream to this smaller pond. This shelter and pond was designated in 2000 as the Garden for Peace. When you next visit, we hope you will take time to pause here, and that you will find it peaceful, too.



From top: The new artistic bench in the "Rest and Be Thankful" seating area in the W.L. Culberson Asiatic Arboretum; the refurbished Pond Viewing Shelter in the Garden for Peace.

Facing page, from top: The Duke stone bridge over the in the Beverly and Bert Welch Woodland Garden Stream; stepping stones surrounded by yellow flag iris (*Iris pseudacorus*) in the Woodland Garden.



40,000

gallons of water  
recirculates in  
the Welch  
Woodland  
Garden Stream



*The Woodland Garden has filled out with lush new plantings and attracts many visitors to its winding paths.*

## Woodland Overlook

The Beverly and Bert Welch Woodland Overlook and Stream have grown ever more popular with visitors, and with the completion of the recirculating feature of the stream, it is even more rejuvenating to behold.

We added more boulders within this landscaped ravine, and we also created a rain garden with a stone swale and Duke stone wall, all of which will help slow the water flow and prevent silt from traveling into the pond.

Near the rain garden and overlook, you will also see the Kerckhoff sculpture that was formerly located immediately behind the Doris Duke Center. Designed and built by Duke alumnus Andrew Preiss and given in memory of Alan Kerckhoff by Kerckhoff's wife, Sylvia, the sculpture can now be seen from all angles.

Throughout the Woodland Garden, we are planting Christmas fern, Cherokee sedges, hellebores, sweetspire, doghobble and summersweet. We also rebuilt a section of Duke stone wall, creating a perfect seat wall for strolling visitors. We are grateful to the family of Carson Howard, a Duke Gardens supporter and member of our board of advisors, for the gift that made this wall repair possible.







## Terrace Gardens Transformations

On the northwest side of the Terrace Gardens is a charming wall garden that we have been enhancing over the last year. Stonemason Brooks Burleson repaired the existing dry-stacked Duke stone wall, and he also constructed edging walls around the lower bed areas, which helps define this somewhat hidden garden. The Scottish capstone style of the edging walls enabled us to use many Duke stone pieces left over from other projects. You'll also see new plantings filling out this lovely space.

*A redesigned wall garden adds a charming new destination to the north side of the Terrace Gardens.*

On the café side of the Terrace Gardens, we are renovating the peony beds, thanks to a gift from Duke Gardens supporter Teddy Taylor, who is also a member of our board of advisors. This bed was originally donated by Teddy and her late husband Bob. The new design will change from solely peonies to a more traditional English mixed border.



From top: The redesigned wall garden on the northwest side of the Terrace Gardens, with poet's laurel (*Danae racemosa*) in the foreground; a close-up of the dry-stacked stone wall in the wall garden.

Facing page: Female ruby-throated hummingbird (*Archilochus colubris*).





## Added Accessibility and Comfort

Visitors will be able to traverse the Gardens with more ease, thanks to new handrails, a water fountain and path improvements we added this year.

In the Culberson Asiatic Arboretum, handrails made from sustainably harvested bamboo sit atop simple but elegant wrought iron supports designed and created by George Barrett, of Storybrook Farm Metal Shop. These were made possible by the late Dr. Horst Meyer, who walked through Duke Gardens daily for decades and wanted to ensure that others would be able to do so comfortably for generations to come.

The wall garden in the Terrace Gardens also has new handrails leading down its entry steps. The rails echo the historic nature of the pergola with brass caps and painted iron posts.

The Memorial Garden is now easier to visit. We paved its winding access path with flagstone that matches the stone used in the entry courtyard. That will provide a more stable base for feet and wheelchairs, and it will stop the path from eroding. We hope to extend the flagstone

*Visitors will be able to traverse the Gardens with more ease, thanks to new handrails, a water fountain and path improvements we added this year.*







From top: Flagstone path in the Memorial Garden, with witch alder (*fothergilla*) in the foreground; a new handrail in the Historic Gardens' wall garden.

Facing page: Bamboo handrail in the "Travel Hopefully" seating alcove in the W.L. Culberson Asiatic Arboretum; red buckeye (*Aesculus pabia*) in the Memorial Garden.

to all of the Memorial Garden paths. In addition, we paved the Hanes Path, which runs from the paved dam down to the Terrace Gardens. This is a main artery through the Gardens, so we know visitors will appreciate the comfort the new paving will provide.

For thirsty visitors, we have had drinking fountains in all sections of Duke Gardens except the Asiatic Arboretum. This year, we remedied that with a new fountain near Pine Clouds Mountain Stream. In addition to serving visitors, this fountain will provide water for our traditional Japanese Tea Gatherings.

Even more exciting, we worked on plans this year for a new restroom, also near Pine Clouds Mountain Stream and designed to blend with this unique garden's style. We already had restrooms in the Terrace Gardens and the Doris Duke Center. But with the growing number of visitors flocking to Duke Gardens, we know this new facility—which we are currently building—will be much appreciated.



## Discovery Garden Developments

We are pleased to announce that the chicken coop in the Charlotte Brody Discovery Garden is once again fully occupied. We had opted to go without chickens for several years, as the state struggled to prevent the spread of the avian flu that afflicted many chickens in the Midwest. But now we have nine new chickens in a variety of breeds, each considerably different from the others. We heralded their arrival as baby chicks with a naming contest for Duke Gardens volunteers, Duke staff and students, and the general public. The entries were a hoot, from Dewey, Cheetam and Howe to Rosencrantz and Gildenstern and Oedipus Pex. We are so pleased to see visitors admiring the chickens and learning about how they serve as productive garden partners.

*We welcomed new chickens to the Discovery Garden, trumpeting their arrival with an online naming contest that drew 1,017 votes.*



From top: Borage (*Borago officinalis*) growing in the Charlotte Brody Discovery Garden, with the Burpee Learning Center in the background; a new resident in the Discovery Garden chicken coop.

Facing page: A natural wind chime hangs from the arbor in the Charlotte Brody Discovery Garden; 'Baby Pam' pie pumpkin (*Cucurbita pepo*) in the Discovery Garden.



**10,841**  
pounds of  
produce  
harvested in the  
Charlotte Brody  
Discovery Garden

Elsewhere in the Discovery Garden, our staff and volunteers have been busy all year planting and harvesting. Since the garden opened, we have donated more than 4 tons of food to local hunger relief organizations.

Your support makes all of this possible. We thank you for helping us to bring nourishment, beauty, learning, inspiration and joy to the Duke and Durham communities, and to visitors from around the world. We look forward to your partnership for another bountiful year.







# Gardens Outreach

From left: Children explore the Charlotte Brody Discovery Garden; papermaking class; Fall Plant Sale; preparing crafts for the Winter Activity Fair.

**Duke Gardens has been a beloved feature of the Duke University campus for decades. But it is also an integral part of the student experience, from academics to extracurricular events and social gatherings. In recent years, we have strengthened our connections to Duke's students and faculty. It gives us great pleasure to see students reaping the rewards of these efforts, and to provide fertile ground for learning, inspiration and enjoyment for students of all ages and visitors from around the world. We thank you for making all of this possible, and we hope you enjoy reading about the profound impact of your support.**

## University partnerships

The Piedmont Prairie has attracted a dramatic number and variety of insects, making it a perfect outdoor lab for entomology research. Dr. Fred Nijhout, a Duke biological



**\$44,275**

gross income  
from the Spring  
Plant Sale, our  
largest ever

sciences professor, is working with students to complete a long-term diversity survey of insect species drawn to this purposefully planted ecosystem.

***Duke biology students are conducting a long-term insect diversity survey in the Piedmont Prairie.***

Elsewhere at Duke, we are working with the Environmental and Sustainability Education group convened by Charlotte Clark, an assistant professor of the practice of sustainability in the division of environmental sciences and policy. Duke Gardens serves as a living laboratory for these and other university collaborations across campus.

Other Duke partnerships include the Nicholas School of the Environment's art and nature group, as well as swing and Latin dances organized by student dance organizations and held in the Doris Duke Center, and the popular Music in the Gardens summer concert series produced by Duke Performances. These collaborations were among 45 university events that took place at Duke Gardens in the past fiscal year.





From left: Spring Plant Sale;  
Classroom Open Hours.

Duke Gardens has become a more proactive partner in Duke's student orientation activities, as well as Blue Devil Days, Family Weekend, Healthy Duke and Alumni Affairs. Our hope is to connect with students as they settle in at Duke, and to be a source of learning and inspiration through their university years and beyond.

## Education & Public Programs

More than 7,000 people participated in free events at Duke Gardens this year, including drop-in exploration stations, festivals and exhibits. An additional 6,000 attended Music in the Gardens concerts. And our Spring Plant Sale was our highest grossing sale ever.

*We taught 76 second-grade students about life cycles in the EPA's Science Day.*

Among our program highlights were our first Festival of Fabulous Mums, a collaboration with the Central Carolina Chrysanthemum Society (CCCS) that drew about 1,400 people over four days. CCCS member and Duke Gardens horticulturist Michelle Rawlins, who grows mums for



display in Duke Gardens, came up with the idea of the festival, which featured more than 200 entries of mums in various categories. It was such a hit that we promptly decided to make it an annual event, much like our Art and Nature exhibits and Fall for Orchids show.

School and family programs at Duke Gardens served more than 7,500 students, including an expanded summer camp series that featured workshops for middle school students. Our camps for kindergarteners through fifth-graders filled up in record time this year, and we offered two scholarships per week. The campers are always a delight to behold as they explore nature up close and seek a deeper understanding of how the world around them works.

Our partnership with the East Durham Children's Initiative (EDCI) continues to expand. We hosted an EDCI camp field trip to Duke Gardens, and we created a series of STEAM (science, technology, engineering, art and math) activities for the school year. We also participated in the Environmental Protection Agency's Science Day at Eastway Elementary, an EDCI school. We taught 76 second-grade students about life cycles.

Clockwise from left: Festival of Fabulous Mums; Fall for Orchids exhibit.

**1,400**  
people attended  
the Festival of  
Fabulous Mums





***More visitors are registering for walking tours than ever before.***

This year marked the 10th anniversary of Duke Gardens' teacher training partnership with Duke's Nasher Museum of Art. "The Art of Nature and the Nature of Art" helps teachers for all grade levels develop new ways to guide students toward a deeper understanding of the exciting ways that art, science and nature intersect.

Garden tours continue to grow in popularity, and we're pleased that our targeted marketing efforts have prompted more people to seek walking tours than ever before. The walking tours give people a deeper view of the Gardens, because they can explore areas where trolley access is limited, including areas of particular interest to participants. Also, since trolleys are limited in capacity, we are able to serve more people on each walking tour. During peak seasons, this shift means we can introduce more people to the beauty and history of Duke Gardens.



**1,800+**  
participants in  
adult education  
programs

In adult programs, more than 1,800 people took classes about horticulture, cooking, photography and other interesting topics. Our horticulture staff members teach many of these classes, enabling people to develop a deeper understanding of gardening and of Duke Gardens. Participants are especially appreciative of the staff instructors' high level of expertise.

Our make-and-take classes were especially popular, from papermaking to holiday greenery, fall table arrangements and basket-weaving. These classes highlight the functional value of plants and gardens, and their lab-style approach creates a strong sense of community, with students inspiring and encouraging each other, sharing supplies and laughter, and creating enduring friendships.



Clockwise from top left: Cooking class; a volunteer helps prepare soil; a volunteer gathers seeds.



**17,161**

volunteer

hours served

in FY'17

## Volunteer Programs

Duke Gardens' volunteers are devoted to maintaining our reputation as a world-class botanic garden, and we benefit tremendously from their commitment and enthusiasm. Among the highlights this year, our Gardens Ambassadors program grew substantially, with volunteers devoting 1,785 hours assisting visitors at the entry kiosk and throughout the Gardens. We also had 10 students from N.C. Central University volunteer throughout the Gardens. And seven volunteers participated in our children's docent training, bringing the number of active children's docents to 30.

The volunteers are also helping to maintain the beauty and integrity of "The Big Easy" sculpture. Five volunteers serve on a rotating team to provide basic repairs to the sculpture and alert the staff to any larger repairs needed. This is a major attraction for visitors, so we are pleased that these volunteers are committed to caring for it through its two-year limited engagement.



## Industry and Business Outreach

Paul Jones, curator of the W.L. Culberson Asiatic Arboretum, was among 11 public gardening professionals from around the U.S. invited by the Portland Japanese Garden to be guest students of their new International Institute for Japanese Arts and Culture. The group spent a week immersed in a sample study of the history and development of the Japanese “way of tea” (*chanoyu*), as well as the structures, gardens and stonework typically associated with tea. Paul and the other participants provided feedback to the institute as it shaped its programs for its official opening.

The Piedmont Prairie has been a source of inspiration and education well beyond Duke and Durham. Stefan Bloodworth, curator of the H.L. Blomquist Garden of Native Plants, traveled with Blomquist horticulturist Annabel Renwick to Renewable Water Resources (ReWa), a wastewater treatment facility in Greenville, S.C. They are in the design phase of converting their wastewater spray fields into an extensive piedmont prairie planting, and our staff members advised ReWa on how it could adapt Duke Gardens’ practices to its site. Stefan and

Clockwise from top left: A corporate meeting in Kirby Horton Hall; a touring company from Durham, England, performs Shakespeare in the Fisher Amphitheater; artwork by a participant in the new Artists in the Gardens workshop series for children.



**7,500+**  
students served  
by our school  
and family  
programs



Annabel also made presentations about the prairie and the Blomquist Garden at the American Public Gardens Association's annual conference in Canada, as well as the Cullowhee Native Plants Conference, the American Society of Landscape Architects regional conference, and the National Native Seed Conference in Washington, D.C.

The prairie is also having an impact in the Research Triangle Park. The biotech firm Syngenta asked the Blomquist staff to help them design a small prairie on their Davis Drive campus. Using our protocols and seeds collected from our prairie, as well as design themes developed through direct consultation with the Blomquist team, a group of Syngenta employees raised plants to install in their own prairie. Our hope is that other businesses will be inspired to plant prairies, giving strength to a vulnerable ecosystem.







## Conservation Internship

Duke Gardens created a new internship dedicated to native plant conservation research and based in the Blomquist Garden of Native Plants. Katherine Hale, a graduate student at the University of Vermont, worked with the Blomquist staff to research best practices for preserving the rare southeastern conifer *Torreya taxifolia*, or Florida nutmeg. Critically endangered throughout its native range, this species is now dependent upon conservation groups like the Georgia Plant Conservation Alliance and the Atlanta Botanical Garden, as well as botanical gardens like Duke Gardens, to work together to develop strategies for its survival. As a result, we have entered into a conservation partnership with both of these groups, in which the Blomquist Garden will manage a local *Torreya taxifolia* seed orchard in Duke Forest to help ensure that this species does not disappear.







Clockwise from top left: Conservation intern Katherine Hale builds a *Torreya taxifolia* seed cage with Stefan Bloodworth, curator of the Blomquist Garden of Native Plants; Duke's Blue Devil mascot joins students as they film a video thanking university donors for enhancing the Duke experience; a new Nature Adventures Camp and children's programs promotional video; *Torreya taxifolia* pollen cones.

Previous page: a wedding reception on the Piva Terrace, with lighting design by Get Lit.

## Website enhancements

We have a new promotional video on our website, featuring Nature Adventures Camp and children's programs. Videographer Ryan Huang, a Duke Ph.D. student, worked with us on this video, bringing great creative energy and ideas. You can view it at [gardens.duke.edu/learn/camp](https://gardens.duke.edu/learn/camp).

New interactive features on our rentals and programs web pages make it easier for users to communicate with us and begin their reservation or registration process. Traffic has increased in both areas since we made the changes, and we continue to explore additional ways to serve our more than 150,000 online visitors more effectively.





## Media Spotlights

Duke Gardens is still No. 1 out of 74 Durham attractions in tripadvisor.com, maintaining our Certificate of Excellence with more than 1,700 reviews and a 5-star average. We also won first place in Durham Magazine's Readers' Choice poll for the third year in a row in the categories of "best event space" and "best outdoor family outing location." Regionally, Duke Gardens was featured this year in Our State and Southern Lady magazines, as well as a Durham-focused article in Garden & Gun magazine.

We are proud of the excellent horticulture, design and programs that earn such accolades. We thank you once again for your support, which makes it all possible.

# 290,612

visits to  
[gardens@duke](https://gardens@duke.edu)  
blog since its  
launch in 2009.

Above: A volunteer leads a tour for Duke architecture students. Right: students from American Dance Festival perform in the Mary Duke Biddle Rose Circle.

P. 42: Volunteer docents discuss the plants in the Charlotte Brody Discovery Garden with out-of-state students on a field trip.

Pp. 44-45: Images from the Kathleen Smith Moss Garden in the W.L. Culberson Asiatic Arboretum.

P. 46: A watercolor conceptual image of the Garden Gateway project.









*“Whether I was exploring hidden alcoves with a new friend in freshman year, having a Sunday picnic with my sister before she graduates, or meditating by the water while the sound of nearby birds filled my ears, the memories held within the winding paths and under the expansive trees of Duke Gardens are one of the greatest gifts Duke has given me.*

*One of my fondest memories in the Gardens was with my class last spring. I took a course on the psychology of mindfulness and we spent many hours in the Gardens, listening to the sounds of rustling leaves or focusing on the wind and sun on our skin. There, we learned how to tune in to nature in a completely new way, embracing the striking expansiveness and presence of the colors, smells and sensations around us.*

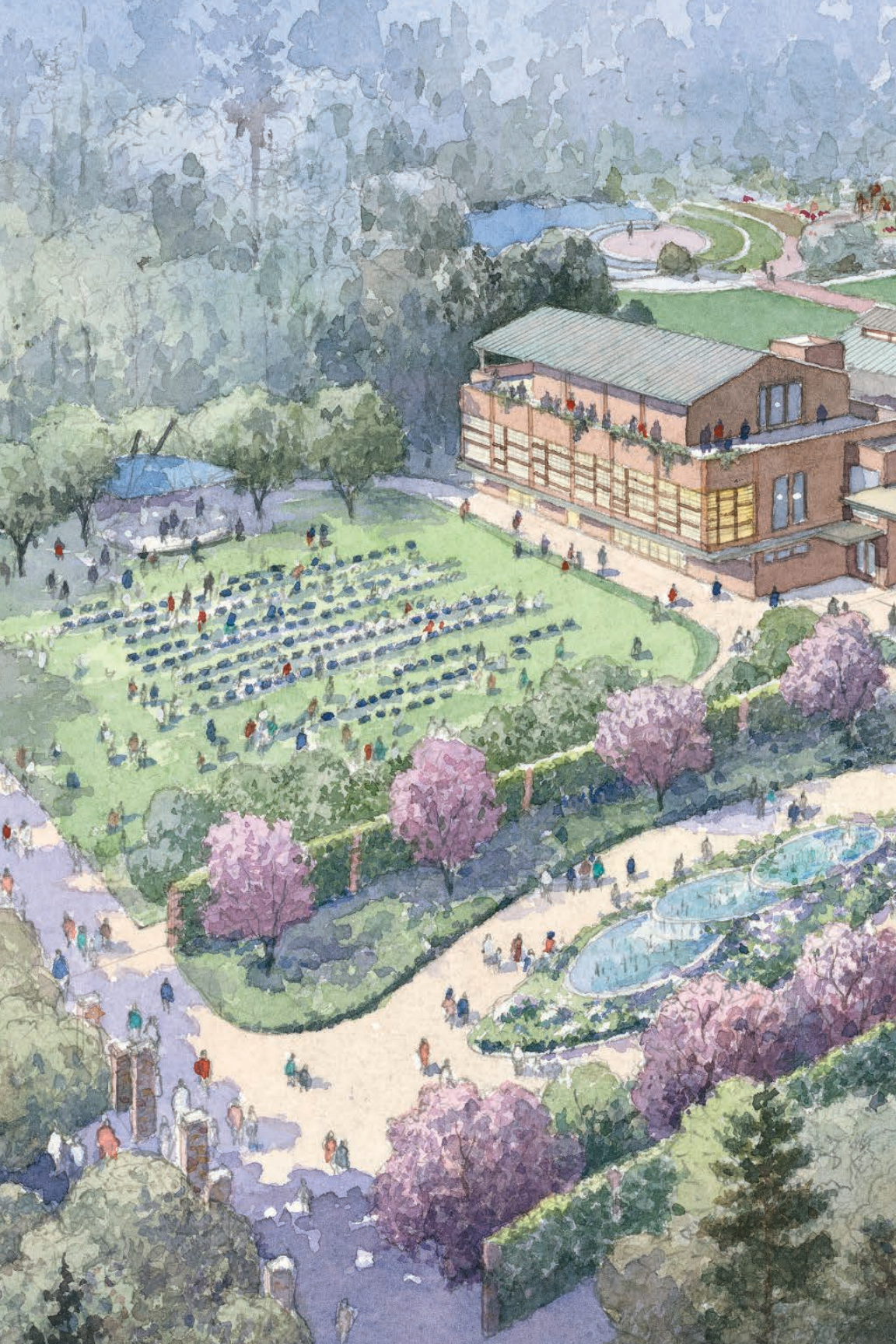
*Now, through Duke’s Wellness Center, I’m creating a mindfulness map of the Gardens so others can explore the peaceful nooks and crannies of our campus.”*



**Gigi Falk**

Cognitive neuroscience major  
Trinity Class of 2018









## The Future of Duke Gardens is Now

Contact Kate Senner ([kate.senner@duke.edu](mailto:kate.senner@duke.edu)) to learn how your gift can make a lasting impact for this iconic space on Duke Campus.

M O C C A

# Friends of Duke Gardens

*gifts received during the 2017 fiscal year (July 1 – June 30) to our Annual Fund*

## Mary Duke Biddle Trent Semans Society

*\$10,000 and up*

Ellen & Rex Adams  
Sydney & Blake Bath  
Stacy & H. J. Brody  
Susan & Paschal Brooks  
Kim & James Buck  
Martha & Jeffrey Gendell  
Anne & Tom Harman  
Carson & Jeffrey Howard  
Chrissy & Joel Huber  
Nancy & Daniel Katz  
Thomas Kenan III  
Carole Klove  
Anne & Charles McIlvaine  
Josephine Powe & Thomas McGuire  
Frances Rollins  
Mary & Robert Ruggiero Jr.  
Doug Runte  
Dan Schiff  
Barbara & Steven Tasher  
Teddy & Bob\* Taylor  
Donna Louzides & Jay Venkatesan  
Sara Zabloutney & Matthew Solum

## Mary Duke Biddle Society

*\$5,000 and up*

Cynthia & Richard Brodhead  
Blake Byrne  
Cavett & Barker French  
Alice & Trig Horton  
Sarah Johnson & David Lyon  
Karen & Jeff Kirby  
Barbara & Todd McCallister  
Judy & Jim McMillin  
Lois Oliver

Kathy & John Piva  
Celestea Sharp  
Mary Sunday  
Rosemary & Jim Thomas  
Mary & Michael Ward  
Tim Warmath

## Directors Society

*\$2,500 and up*

Margaret Ball & Peter Stace  
Brenda & Keith Brodie\*  
Samantha & Daniel Cluster  
Martha Ann Keels & Dennis Clements  
Araminta & William Coolidge  
Chicita Culberson  
Larry Daniel  
Kelly Davis  
Elizabeth & Michael Gorman  
Jill & Richard Granoff  
Mary & Walter Johnson  
Kara & David Landers  
Stacey Marshall & Daniel Feldstein  
Melissa & Gray Perkins  
Doren Pinnell  
Lamont Powell  
Mary & Bob Price  
Chris Reese  
Maureen & Michael Rhodes  
Mae Rose Rogers  
Katy & Erik Simpson  
Elizabeth & Jim Surratt  
Lee & Bill Thomas  
Corinne & Scott Welsh  
Evelyn Rivers Wilbanks

\* deceased

## Pergola Society

*\$1,000 and up*

Anonymous  
Diana & Nicholas Allen  
Nancy Anderson  
Carol Armstrong  
Margaret Babb  
Sarah & Gabor Balassa  
Stan Brown  
Jan & Bill Brown  
Delaina & Al Buehler  
Talarah & John Cataldi  
Margaret & Henry Caughman  
Ye-Ying Cen & Oliver Cass  
Tessa Chamberlain & Eric Childs  
Suzanne Citron  
Ellie Collins  
Candace Chandler, Bob, Laura &  
Courtney Douglas  
Evebell Dunham  
Frances Durden  
Jennifer & Andrew Eimer  
Philip Erlenbach  
Betsy & Kurt Euler  
Stefanie & David Faris  
Joan & William Farrell  
Stacey Marshall & Daniel Feldstein  
Kristine Finlay  
Cynthia Frost  
Ann & Cary Gravatt  
Leslie Graves & John Fucigna  
Blair Greber-Raines  
Nancy & Don Grigg  
Julia & James Hanna  
Lisa & David Harrington  
Christal Henner-Welland & Roy Welland  
Amanda & Michael Huttenlocher



Alyson & Bruce Irom  
 Gail & Robert Jarrow  
 Ray Jones  
 Catherine Wilfert & Samuel Katz  
 Ann & William Kirkland  
 Korin & Larry Korman  
 Patricia & John Koskinen  
 Polly & Bill LeFevre  
 Ann Leininger & George Hugh  
 Shauna & Steve Luck  
 Carolyn & William McClatchey  
 Christopher McCormick  
 Wei Li & Michael McDonald  
 Margaret & Ross McKinney  
 Margaret McKinney-Kane  
 Lyn Means & James Zimpritch  
 Joan Mertens  
 Mary Metz  
 Carolyn & David Molthrop  
 Charlotte & Tom Newby  
 Carolyn & Paul Rizza  
 Theo & Ronald Roddy  
 Ruth Ross  
 Cheryl Sanford & Richard Danner  
 Kathleen Sanzo  
 Elizabeth & Michael Schoenfeld  
 Terri Schrage  
 Erika & Zachary Smith  
 Margo Soule & Thomas Schult  
 Selah & William Sprinkel  
 Lyle & Peter Walter  
 Elaine & Bill Watson  
 Sterly Wilder  
 Susan Shaw & Pelham Wilder  
 Amy & Steven Williams  
 Louise & Ashton Wiltshire  
 Charlie Witzleben  
 Patricia Workman  
 Kim & Richard Zimlich

## Iris Society

*\$500 and up*

Ingrid & Judson Allen  
 Elizabeth & Logan Allin  
 Baerbel & Jon Allingham  
 Elizabeth & Alvin Alsobrook  
 Marilyn Anderson  
 Jacqueline & Edward Atkins  
 Sonia Berman  
 Wendy Robineau & Donald Beskind  
 Molly Bierman  
 Patty Bowman  
 Stacey Brodbar  
 Mary Ann Brown & Judith Woodburn  
 Alma Buck  
 William Buice III  
 Bonnie Bycoff  
 Susan & Gene Carlone  
 Noelle & Jeff Chard  
 Sue & Tony Clark  
 Benjamin Clark Jr.  
 Rose Marie & Andre Clemandot  
 Sarah & Matt Cloues  
 Laura & Kevin Colebank  
 Mary Pat & Scott Davis  
 Mary & Chuck Edgerton  
 Austin Esecson  
 Gale & James Farlow  
 Amy & Jim Flannery  
 Caroline Flinn  
 Amy & Dan Forrestal  
 Sandra & Ruffin Franklin  
 Madeline Gartner & Mark Ahrendt  
 Amanda & Nick Gelber  
 Jane & Dennis Gilmore  
 Mindy & Jonathan Gray  
 Whitney Greene  
 Bill Griesser

Matthew Griffith  
 Whitney Grumhaus  
 Susan & Geoffrey Harris  
 Susanna Temkin & Curtis Harting  
 Meredith Herbert  
 Trang Cung & Michael Ho  
 Ruby & Lofton Holder  
 Margaret Howard  
 Marilyn & Salim Idriss  
 Janice & Jay Jester  
 Lee Johns  
 Mary & Jim Jones  
 Terry & Fred Jove  
 Alexandra & John Ketner  
 Jane & Robert Koke  
 Yen Duong & Mark Krasniewski  
 Mark Kraynak  
 Laura Krister  
 Sara & Richard Leff  
 Jo Ann Levering  
 Suzan & Edward Mabry  
 Sallie Maxwell & Marc Smith  
 Brenna McNiff  
 Lavonne Meads  
 Gabe Meyer  
 Georgina & Jon Meyer  
 Alex Miron  
 Susan & Dewitt Nunn  
 Beth & Virgil Page  
 Marguerite Patrick  
 Sally Pearson  
 Carolyn & Wade Penny  
 Amy Peppers  
 Andrew Pettit  
 Michelle & George Pettit  
 Donna Quinn  
 Merry & Robert Rabb  
 Kay & Renny Randolph  
 Virginia & Steven Roark



Nicholas Romano  
 Emily & Robert Rosenfeld  
 Linda & Bruce Ruzinsky  
 Deborah Schwengel  
 Bernadette Scott  
 Michelle & Daniel Silver  
 Dylan Smith  
 Rebecca & Michael Smith  
 Katie Stiner  
 Jo Ann & William Storey  
 Susanne & Kenneth Taylor  
 Phyllis Thomas  
 Barbara & Samuel Wang  
 Lisa Warshaw  
 Carolyn & Hunter Weimer  
 Norma & Dick White  
 Barbara Wold  
 Hai & Charles Guo

### Terrace Society

*\$250 and up*

Melinda Abrazado  
 Cindy & Chuck Anderson  
 Stephen Archer  
 Gayle Argon & Matthew Berg  
 Jane & Greg Baecher  
 Arup Banerjee  
 Diane & James Bauer  
 Jana & Kyle Beauchamp  
 Elaine Heath & Randall Bell  
 Brian Berger  
 Kim Bergin  
 Nicolette & Thomas Berte  
 Barbara Branson  
 Elizabeth & Jack Braun  
 Pritha & Jeffrey Browning  
 Majorie McElroy & Edwin Burmeister  
 Christine & Jim Byerly

Susan & George Byrne  
 Ashlea & Christopher Canlas  
 James Carlin Jr.  
 Jean & Paul Carr  
 Mary & William Chambers  
 Frank Chang  
 Lester Hao-Lin Chen  
 Melanie Chico  
 Brooke Church  
 Jane Clayton  
 Lauren Colasacco  
 Lauren Cosgrove & Thomas O'Brien  
 Gracie & Ernest Davenport  
 Mia & Joshua Davidson  
 Rachel Davies  
 Grace Davis  
 Eileen McCorry & Jeff Derecki  
 Steven Edbril  
 Suzanne Eden & Jonathan Schnaars  
 Mary Alice & Robert Elkins  
 Elizabeth & Edward Emes  
 Susan & Al Ende  
 Rickie & Ted Esslinger  
 Susan & Allan Eure  
 Ellen Ewart  
 Andy Fallat Jr.  
 Ellie & James Ferguson  
 Pepper & Donald Fluke  
 Alaina & Keith Fournier  
 Howard Francis  
 Sheree & Eugene Freid  
 Elizabeth & Patrick Garrett  
 Colin Garry  
 Bobbi & Ralph Goldstein  
 Nancy & Craufurd Goodwin  
 Al Goshaw  
 Carol & Bill Griffith  
 Melody & T. R. Hainline  
 Marie & Sam Hammond

Phyllis & Douglas Hardy  
 Harry Harkins Jr.  
 Gray Harley  
 Barbara Hiaasen  
 Jo Howren  
 Mary Ann & Robert Huey  
 Louise & Jim Ingold  
 Harry Jenkins  
 Stuart Johnston  
 Michael Kahn  
 Anthony Kang  
 Dana & Andrew Kapustin  
 Julia & Dan Kaufman  
 Vinitha Kaushik  
 Achsah & James Keegan  
 Pat & Allen Kelley  
 Melanie & John Kidd  
 Nancy Kimmerle  
 Lee Kolosna  
 Samantha & Robert Koslow  
 Leslie & Kevin Kuchinski  
 Uma Kuruganti  
 Emily & William Lacina  
 Martha & William Lashbrook  
 Frank Lauch  
 Patrice LeClerc  
 Karen & David Logeman  
 Constance & David Lyons  
 Nina Marinova  
 Nancy Marks  
 Maureen Martin-Peer & Gary Peer  
 James Mason  
 Jennifer May  
 Doris Cooper McCoy  
 Nancy & Dean McCumber  
 Meredith & Warren McElmurry  
 Joan McFather  
 Elizabeth Mejia-Millan  
 Christopher Meyer



Eleanor & Justus Meyer  
 Mary & Bob Michael  
 Alexander Miller  
 Jennifer & Lawrence Moore  
 Sheryl & William Morano  
 Elizabeth Mullett  
 Kevin & Paul Nesline  
 Marilyn Newell  
 Santo Nicosia  
 Anne & Mark Oberndorf  
 Ashley & Lawrence O'Connor  
 Kimberley Partoll  
 Martha Penny  
 Anne Peret  
 Catherine & Jason Piche  
 Richard Powell & C.T. Woods-Powell  
 Rebecca & Jim Prestwood  
 Lynn & Clayton Pruitt  
 Adam Pullano  
 Lihong Zhang & Shangfei Qu  
 Mary & Joseph Ramage  
 Barbara Randolph-Anderson  
 David Reed  
 Cynthia Richards  
 Georgia Richter  
 Katherine & Kevin Robbins  
 Lu & Carl Rose  
 Julie & Jeffrey Rothfeld  
 Nell & Bruce Rubidge  
 Jennifer & Craig Saperstein  
 Allison & Ethan Schiffres  
 Kate & Will Senner  
 Lee & Fred Shuchart  
 Munira Siddiqui  
 Linda & John Sigmon  
 Phyllis & Mel Snyder  
 Jane & Murray Spruill  
 Cecile & James Srodes  
 Jean Stallard & John Kelly

Laurie & Colin Starks  
 Dara Steele-Belkin & Jeffrey Belkin  
 Dorothy & John Swartz  
 Samuel Tasher  
 Stephen Teitsworth  
 Karen Terry  
 Jeanette & Keith Thackrey  
 Amanda & Reese Thompson  
 Hank Tingler  
 Christina & James Trowbridge  
 Susan Van Eyck & Barry Johnson  
 Debara Tucci & Kevan VanLandingham  
 Christina Wagner & Tony Leung  
 Gibby & Michael Waitzkin  
 Mary Anne Walker  
 AnnMarie & Thomas Ward  
 Betsy & John Waterman  
 Sara Weinheimer  
 Irka Templeton & Ryan Welsh  
 Jean & Charles Wilson  
 Sheryl & Bob Winton  
 Kim & Jacob Wood  
 Alma Woodyard  
 Frederick Wu  
 Margaret & Jim Young  
 Ashley & Jordan Zaslav  
 Baifei Zeng & Shaofeng Yu  
 Yun Zhang  
 Priscilla & Don Zobel

*(In addition, we appreciate having  
 received 1,212 gifts of support under \$250.)*



# Duke Gardens Supporters

*gifts received during the 2017 fiscal year (July 1 – June 30) to our endowments,  
capital projects and garden projects*

## *\$10,000 and up*

Anonymous  
Pamela & Norman Bradford  
Leslle & George Biddle  
Frankie & Edward Boston  
Hyman & Stacy Brody  
Dowd Foundation Inc.  
Carmen & David Durack  
Benjamin Franklin  
F. M. Kirby Foundation  
Ann & Cary Gravatt  
Jame & Karin Klove Harris  
Jeff & Carson Dowd Howard  
Danny & Nancy Katz  
Mary & Hyun Kim  
Barbara Klove  
Joanne & Jack Lott  
Christopher & Simone Meyer  
Estate of Toshiko Nakayama  
Frances Page Rollins  
Molly Simes  
Teddy Taylor  
Marilyn Bell Wagner  
Bert Welch

## *\$5,000 and up*

Kathleen Jacobson Allen  
Placide Barada  
Dalton Family Foundation  
Bud & Gretchen Dudley  
Erica & Robert Gringle  
Sally Trent Harris  
Rita Holloway  
Joe Johnson  
Kim Family Trust  
Carole Klove  
Hank Majestic  
John & Kathy Piva  
Nancy Thompson  
Evelyn Rivers Wilbanks  
Estate of Alice Zawadzki  
Nancy & Dave Zwiener

## *\$2,500 and up*

Allen & Jane Church  
Chicita Culberston  
Larry T. Daniels

## *\$1,000 and up*

Anonymous  
Rex & Ellen Cates Adams  
Jan & Bill Brown  
Debbie & Wyatt Crumpler  
Mary Dawson  
Fran Durden  
Cynthia & Nelson Farris  
Don & Nancy Grigg  
Gary Kremen  
Suzanne Loder  
Mary Dysart Metz  
Anne Peret  
Deborah Schwartz  
Karen Untz  
Jim Zimpritch





WOODWORKING CENTER

WOODWORKING CENTER

WOODWORKING CENTER





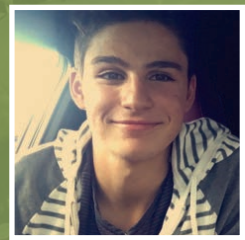
*“This semester, I am fortunate to take part in an engineering design project based in Duke Gardens. Tasked with automating the process of raising and lowering the lids of the cold frames in the Discovery Garden, my four classmates and I spend a considerable amount of time there. This project has given me the opportunity to explore parts of the Gardens that I had never seen before, and it has shown me the extent to which the Gardens can be the perfect place to study, relax, be with friends or be alone.*”

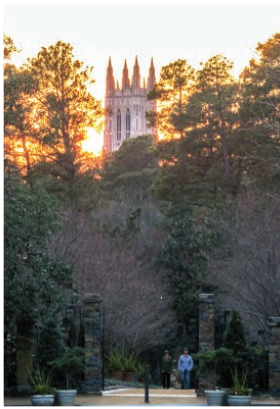
*Each time I walk through the Gardens, I find it incredible how immersive an experience it is. I can forget about my upcoming deadlines and simply focus on the beauty of nature. I hope to give back to Duke Gardens by completing this project to the best of my ability.”*

**Marc Jabbour**

Pratt School of Engineering

Class of 2021





## MEMORIALS (2016-2017)

Pat Alt  
 Bonnie Anderson  
 Carol Anderson WC'69  
 Lewis Anderson G'33; P'68; P'69; P'72  
 Pat Anderson N'42; P'68; P'69; P'72  
 F. Andy Barada Jr.  
 Jean Beckham S'03  
 Roberta Brisendine  
 Wesley Brisendine  
 Marie Broadwell  
 H. Keith H. Brodie  
 Susan Browning WC'71  
 Charlotte Buchheit  
 Stuart Buice WC'64  
 Cesar Cauce T'75  
 Steven R. Church F'92; B'92  
 Charity Cole  
 Edythe Copeland  
 Helen Corbett  
 George Corey T'69  
 Carson Dalton T'54  
 Edwin Speight Daniel Sr.  
 Edwin Speight Daniel Jr.  
 Faye Tyson Daniel  
 Ruby Thompson Daniel  
 Bob Durden  
 Callista Loder Farahany  
 Rebecca Fillmore  
 Richard Fillmore  
 Brian Finlay T'88  
 Evelyn Fogaras  
 Larsen Gregory T'90  
 Rita Lynn Guerrero  
 Archie Hammond  
 Loric Hammond

Mary Susan Harrison  
 Patricia Hiaasen  
 Marie Hofman  
 Betsy Hood  
 Catherine Huisking  
 Charles Huisking  
 Frank Huisking  
 Amanda S. Johnston T'04  
 Betty Jordan  
 Elizabeth Jordan  
 Ed Kaemmer  
 Jennifer Kaffenberger T'99  
 Jean Kanters-Utis  
 Alan Kerckhoff  
 James Kirby T'52  
 Beatrice Krabacher  
 David Krabacher  
 Martha Krolkowski  
 Wesley Lang Sr.  
 Thomas Langford, Jr. T'48  
 Paula Lau  
 Charles Lucas Jr. T'61  
 Ann Majestic T'74; L'82  
 James Martens T'97  
 Ahti Martikainen  
 Mary Martikainen  
 Nan Mason  
 Katie McClary T'01  
 Joyce Meizen  
 Carolyn Mercer  
 Jack Mercer T'42  
 Walter Metz E'65; G'68  
 Horst Meyer  
 Ruth Mary Meyer  
 John Milligan  
 Alvin Mintz  
 Elaine Montgomery

David Mulbah  
 Nina Murphy G'41  
 Barbara Newborg  
 Nora Nicholson  
 Phyllis Parker  
 Nancy Pendley  
 Sheldon Pinnell T'59  
 A. Barney Price T'46  
 Reynolds Price T'55  
 Anne Robertson WC'40  
 Thomas S. Roy, Jr.  
 Kenneth Ruger  
 Wade Sato  
 Kathleen Savio  
 Katie Sheriff  
 Carl Schneeweiss T'36  
 Phillip Schragger  
 Jenny Semans G'06  
 Mary Duke Biddle Trent Semans WC'39  
 Katherine Sheriff T'01  
 George Smith  
 Richard C. Smith G'52; G'57  
 John Sourbeer  
 John Stone E'55  
 Harriet Tindal G'40  
 Sandra Tuthill  
 Malcolm Tyor M'46  
 Jean Volkenburgh T'37  
 Marjorie Koch Walter  
 Patricia Weber  
 Richard White E'46  
 George Wilbanks T'53; M'56  
 Jonlyn Wilkins  
 Edward Williams T'53  
 Chris Williams  
 Michael Yarborough T'77



## HONORS (2016-2017)

Jean Adams WC'72  
 Carol Armstrong WC'63  
 Cindy Brodhead  
 Richard Brodhead  
 Grady Carlson T'75  
 Lester Chen T'96  
 Sue Concannon  
 Joseph Connolly X'13  
 Kevin Cox  
 Betty Roney Dailey  
 Larry Daniel  
 Teresa Dark  
 Ashley Dickerson T'05  
 Dusty Dickerson  
 Becky Dukes WC'56  
 Mary Fillmore  
 Meredith Forster T'99  
 Virginia Gorman  
 Eric Hanson

Paul Jones  
 Chelsey Kenney  
 Danielle Kapustin T'21  
 Russell Kirk G'41  
 Frank Konhaus T'80  
 Mike Krzyzewski  
 Elizabeth Lacy  
 Judith Lancaster  
 Bill LeFevre  
 Polly LeFevre  
 Jan Little  
 B.J. Love  
 Thomas Marmaduke E'10  
 Richard Marvel  
 Patrick McGuire  
 Judy McMillin  
 Bobby Mottern  
 Charles Murphy  
 Matt Norton T'06  
 Mark Olson  
 Athelia Paulli

Ingrid Pergament  
 John Piva Jr.  
 Charles Powell  
 Meg Powell  
 Calvina Quinn  
 Kathleen Savio  
 Kate Senner  
 Dan Shiff T'85; B'89  
 Molly Simes  
 Meghan Slocum T'98  
 Karen Webbink  
 Christopher Welland  
 Richard White  
 Jiayuan Xiao

---

Reunion Classes of:

1964	1986	2006
1966	1988	2009
1970	1997	2012
1976	2001	
1982	2002	

Images in this section:

P. 49: Dedication of the Cindy Brodhead Pergola.

Pp. 50-51, from left: Farewell luncheon for outgoing Board of Advisors chair Cindy Brodhead on the Frances Rollins Overlook; descendants of the late Frederick H. Leubuscher, designer of the Leubuscher Rock Garden in the Historic Gardens, gather for a photo with the rock garden behind them; a student writes a thank-you note to a Duke Gardens donor.

P. 53: Camellias (*Camellia sasanqua* "Dream Team") bloom in "Travel Hopefully," a new gathering spot made possible by David and Carmen Durack in the W.L. Culberson Asiatic Arboretum.

P. 54: Cold frame enclosures in front of the Burpee Learning Center in the Charlotte Brody Discovery Garden.

Pp. 56-57, from left: Duke Chapel framed by Duke Gardens; Duke alumni enjoy a Patrick Dougherty-style stick-weaving lesson at "The Big Easy" sculpture; Cindy Brodhead with Bill LeFevre and A. Eugene Washington, M.D., Duke University's chancellor for health affairs, at the dedication of the Cindy Brodhead Pergola.

P. 58: A bamboo and stone fountain in the W.L. Culberson Asiatic Arboretum.



# staff

Kavanah Anderson Education Program Coordinator  
Stefan Bloodworth Curator, H.L. Blomquist Garden of Native Plants  
BJ Boyarsky Education Program Assistant  
Mandy Cuskelly Assistant Horticulturist  
Laura Daly Assistant Horticulturist  
Lindsey Fleetwood Horticulturist  
Caroline Flinn Administrative Assistant to the Director  
Beth Hall Paul J. Kramer Plant Collections Manager  
Jeff Harward Horticultural Specialist, Sr.  
Chuck Hemric Director of Volunteer Services  
Kati Henderson Education Program Assistant  
Chris Holaday Digital Image Specialist (temporary)  
Jason Holmes Curator, Doris Duke Center Gardens  
Lauren Smith Hong Annual Fund and Membership Officer  
Paul Jones Curator, W.L. Culberson Asiatic Arboretum  
Marcia Julien Director, Special Events  
William M. LeFevre Executive Director  
Jan Little Director of Education and Public Programs  
Tanisa Little Manager, Budget and Cost Allocations  
(Duke Financial Services)  
Matt Luks-Jurutka Assistant Horticulturist  
Barbara Murphy Registrar  
Robert Mottern Director of Horticulture  
Mike Owens Curator, Terraces and Historic Gardens  
Michelle Rawlins Horticulturist  
Annabel Renwick Horticulturist  
Nick Schwab Assistant Horticulturist  
Kate Senner Director, Development and Major Gifts  
Leola Smith The Terrace Shop Manager  
Millicent Snow Development Assistant  
Orla Swift Director of Marketing and Communications  
Jan Watson Horticulturist  
Hope Wilder Education Program Assistant  
Sheon Wilson Publications Coordinator  
Joel Woolard Gardening Assistant (temporary)

## SPECIAL EVENT AND VISITOR SERVICES ASSISTANTS

Hannah Boning  
Dustin Deluca  
Jonah Embry-Seckler  
Juliet Jensen  
Bijan Karkouki  
Sara McCreary  
Taylor Minton  
Van Nguyen  
Alexander Parker  
Bobby Schneider  
Britta Tyler

## SUMMER INTERNS

Hannah Brown  
Katherine Hale  
Madison Hobbs  
Rachel Jessup  
Ryan Leary

## WORK-STUDY STUDENTS

Anthony Cardellini  
Richard Chen  
Katrina Herrera  
Katherine James  
Carlton Johnson  
Andrea Kolarova  
Rachael Lau  
Isaac Lund  
Devika Naphade  
Matthew Rehnborg  
Michelle Rodriguez  
Quinn Scanlan  
Hunter Stark  
Emily Tucker  
Samantha Votzke  
Alexander Weck  
Cecilia Xie  
Annie Yang

# board of advisors

Ellen Adams Durham, NC

Cynthia Brodhead, J.D., *Outgoing Chair* Durham, NC

Stacy Copeland Brody Greenville, NC

Susan Donahue Brooks Bernardsville, NJ

James (Jeb) Edward Buck II Greenwich, CT

Charlotte Clark, Ph.D. Durham, NC

Carson D. Howard, *Vice Chair* Mooresville, NC

Jeffrey C. Howard Mooresville, NC

Christine (Chrissy) Huber Durham, NC

Karen M. Kirby Morristown, NJ

Carole Ann Klove Half Moon Bay, CA

Charles Coen McIlvaine Darien, CT

Judy McMillin Dallas, TX

Lois Pounds Oliver, M.D. Durham, NC

John J. Piva Jr. Durham, NC

Josephine Powe Calabasas, CA

Mary W. Price Edina, MN

Katherine (Kay) B. Randolph Durham, NC

Theo J. Roddy Durham, NC

Mae Rose Rogers New York, NY

Frances P. Rollins Durham, NC

Daniel S. Schiff, M.B.A., *Chair* Bethesda, MD

Barbara E. Tasher Berkeley Heights, NJ

Teddy J. Taylor Dallas, TX

Mary Ballard Ward Winnetka, IL

Timothy Warmath Greensboro, NC

Richard A. White, Ph.D. Hillsborough, NC

Sterly L. Wilder Durham, NC

## Honorary Member

Mary Trent Jones Abingdon, VA

## Emeritus

Anne Micheaux Akwari, M.D., J.D. Durham, NC

Taimi Anderson Chapel Hill, NC

Alice Horton Durham, NC

## Student Representatives

Carlton Johnson (T'20)

Rebecca Norman (P'20)





Cover images: 'Akebono' cherry trees in bloom in the Entry Allée.

Photos by Lori Sullivan.

This page: Chinese peony (*Paeonia lactiflora* 'Krinkled White')  
in the Page-Rollins White Garden. Photo by Brian Wells.

Full page photos: Kati Henderson (G'15; p. 26), Rose James (T'20; p. 42),  
Sue Lannon (pp. 1, 44), Carolyn Scott Photography (p. 36),

Lori Sullivan (pp. 2, 8, 10, 13), Orla Swift (G'06; pp. 53, 54), Karen Webbink (p. 6),

Micaela Unda (T'19; pp. 18, 21), Nancy Walker (p. 41), Brian Wells (pp. 58, 61).

Watercolor rendering of the Garden Gateway conceptual design by Michael McCann.

Additional contributing photographers: Kavanah Anderson (G'17), Robert Ayers,  
Sudeshna Banks, Clarence Burke, Laura Daly, Rick Fisher, Lindsey Fleetwood, Kathy  
Julian, Sarah Leach Smith, Bill LeFevre, Reagan Lunn, Flora O'Brien, Jim Wallace,  
Cecilia Xie (T'18).

Editor: Orla Swift

Editorial assistants: Annie Yang (T'20) and Rose James (T'20)



*Sarah P. Duke Gardens creates and nurtures an environment in the heart of Duke University for learning, inspiration and enjoyment through excellence in horticulture.*

gardens.duke.edu | Box 90341 | Durham, North Carolina | 27708-0341